



Registered Charity 1142955
OFSTED Registration EY445021



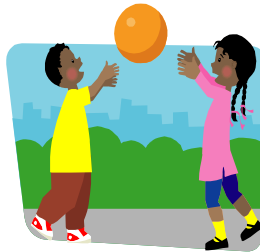
**After School Club
For Children held at
Botesdale Village Hall
15:00 – 18:00
Monday-Friday
Term time only**

Botesdale After School Club is supported and encouraged by Suffolk County Council.

Charity Number 1142955

Web Site www.botesdale-after-school-club.org.uk

Club Tel: 07952961285



Botesdale After School Club

Botesdale After School Club aims to provide quality, affordable childcare in a safe, fun and social environment, which is accessible to all children and guarantees parents/carers peace of mind. The club was conceived in 2001 and opened its doors to the first children in May 2003.

We operate from Botesdale Village hall Monday to Friday afternoons during the school term between 15:25 and 18:00. We provide care for up to 50 children aged 3 to 11 years. The children are collected from St Botolphs School each afternoon by BASC staff, which ensures their safe arrival at the club. Spaces are available to children from the surrounding catchment area and we provide a pickup service for parents wishing to use us from the following schools; Mellis, Wortham, Gislingham, Scole and Palgrave, there will be a small additional transport charge for these schools.

Club information

BASC offers all children a fun activity club and offers you peace of mind.

The club is proving very successful and we currently have limited spaces available. Our numbers naturally change all the time, as people's needs evolve so we would recommend booking in advance to guarantee your child's space.

Contact Numbers

Botesdale After School Club – 07952 961 285

Botesdale Breakfast Club – 07758 102 043

Play Leaders Paula Mills and Bridget Simms-Baalham

Web Site – www.Botesdale-After-School-Club.org.uk



Registered Charity 1142955
OFSTED Registration EY445021



The children are offered a choice of nutritious snacks and drinks on arrival.

The children are free to choose from a variety of art and craft activities and a range of table top games. We have a Wii for them to play and a host of other activities for them at the club.

We also provide equipment for physical play activities, both indoors and out. When the weather allows we have full use of St Botolphs playing-field and adventure play area, within the constraints of the necessary supervision. Kind permission from Mr Mark Cobbold head teacher of St. Botolph's We have an IT and chill out zone for children who wish to relax rather than play.

During autumn and winter terms when we are unable to go outdoors we offer the children a range of cooking activities.

Our Staff

All Staff are qualified and experienced. The Play Leaders and Play workers have been selected for their enthusiasm and commitment in creating a child-led environment. We encourage staff to continue training for higher qualifications.

OFSTED Registered

The club is registered with OFSTED and staffed each day with a Play-leader and Play-workers. We have policies to cover the children's arrival and departure, behaviour and complaints. We are familiar with the current Health and Safety Regulations and intend to be fully compliant.

Working With Suffolk County Council

BASC is managed by a voluntary management committee made up from parents with children at the club, with help and advice from Suffolk County Council. The committee meets regularly and has a constitution to control its activities.

Partnership with Parents

We operate a 'Partnership with Parents' policy, to encourage feedback from children and parents to staff and committee. We welcome members to support us in fundraising, donating equipment, and serving on the committee. We rely on the support of all our members.

Contact Numbers

Botesdale After School Club – 07952 961 285

Botesdale Breakfast Club – 07758 102 043

Play Leaders Paula Mills and Bridget Simms-Baalham

Web Site – www.Botesdale-After-School-Club.org.uk



Registered Charity 1142955
OFSTED Registration EY445021



Membership

Membership of BASC is open to parents, guardians and carers of children in local schools and others. Details of membership will be held in accordance with our Confidentiality and Data Protection Policy.

Annual Subscription

The annual family subscription for 2018/2019 is £20.00.

Session Fees

3.25pm – 4.30pm	£5.00
3.25pm – 5.30pm	£10.00
3.25pm – 6.00pm	£12.00/£11.00 Siblings

Our business plan includes provisions for the fees and staff costs to rise annually, at least in line with inflation.

Safeguarding Children Statement

BASC is here to serve children and families. We will listen and keep private anything you have to say to us. However, we have to inform the Child Protection Agencies if we are worried about the care a child is receiving.

Child Protection Officer

Bridget Simms-Baalham and Paula Mills

BASC Committee 2018/19

Chair person

Jayne O'Loane

Secretary

Alex Richards

Treasurers

Charlotte Austin

Pay Roll Treasurer

Hilary Mason

Bookings

Paula Mills

Bridget Simms-Baalham

Contact Numbers

Botesdale After School Club – 07952 961 285

Botesdale Breakfast Club – 07758 102 043

Play Leaders Paula Mills and Bridget Simms-Baalham

Web Site – www.Botesdale-After-School-Club.org.uk



Registered Charity 1142955
OFSTED Registration EY445021



Managers

Paula Mills
Bridget Simms-Baalham

PLAY COORDINATORS

Sarah Raynham
Emma Humphrey
Gemma Jackson
Jo Wellings
Claire Buckley
Janie Dowds

Contact Numbers

Botesdale After School Club – 07952 961 285
Botesdale Breakfast Club – 07758 102 043
Play Leaders Paula Mills and Bridget Simms-Baalham
Web Site – www.Botesdale-After-School-Club.org.uk